



FREE PATTERN

BLUSH TOP



Pattern Credit : Circulo

PATMERN

PATMERN

BLUSH TOP



Size: 6

Level of difficulty: ● ● ●

Created by Circulo Studio

Material

2 balls

Crochet hook D-3

Tapestry needle

Paper, pencil & scissors.

Gauge

14 S x 16 R = 4"/10 cm over Pattern using needles 8.

Transfer measurement chart to paper to guide you along. Arrows indicate direction.

Disclaimer

Measurements are approximate due to differences between centimeters and inches, needle sizes and tension (gauges). All care has been taken to allow accurate completion of the pattern.

Stitch glossary and abbreviations:

stitch: st

make: mk

skip: sk

chain: ch

slip st: sl st

single crochet: sc

double crochet: dc

treble crochet: tr

dc2tog: 2 dc closed together in different base sts,

dc3tog: 3 dc together closed in different base sts,

Crab st: sc from left to right

Pattern A - chart 1

Pattern B - chart 2

Increase: inc

decrease: dec

Pattern A - chart 1

Pattern B - chart 2

Right & left shoulder - chart 3

Sleeve - part 2 - chart 4

Top - use hook D-3.

Front & back are worked simultaneously. Crochet in the round. Start at hemline.

Part 1: Ch 200, close with 1 sl st.

Rows 1 - 30: follow Pattern A - 20 motifs, chart 1, rep sts.

Part 2: Work front & back separately, back & forth. Follow Pattern B - chart 2, rep sts and dec 1 motif on each side to shape armholes.

Back continuation: Follow Pattern B - 6 central motifs & 1 half motif for each side. Rows 31 - 45: follow chart 2 and rep sts. Fasten off.

Front continuation: Follow Pattern B - 6 central motifs & 1 half motif for each side. Rows 31 - 41: follow chart 2 and rep sts. Work on each shoulder separately: Rows 42 - 45: follow chart 3. Fasten off and set piece a side.

Sleeves (mk 2): Use hook D-3.

Start at cuff. Crochet in the round.

Part 1: Ch 100, close with 1 sl st.

Rows 1 - 12: follow Pattern A - 10 motifs, chart 1 and rep sts.

Part 2: work back & forth.

Rows 13 - 27: follow chart 4.

Pleats on top of sleeve: Cut an extra strand to 15.75" and use tapestry needle to insert this tail into row 27, create pleats until top of sleeve measures 3.25".

Pleats on cuff: Cut an extra strand to 23.75" and use tapestry needle to insert this tail into foundation ch, pull until circumference of cuff is 15". Mk the same on the other sleeve.

Assembly: Use tapestry needle and close shoulders 4", leave 6.75" open for sleeves. Sew sleeves onto body.

Crochet edge finishing: Mk 1 row in sc and 1 row in Crab st around neckline = 25 sts, cuff = 82 sts and hemline = 160 sts.

BLUSH TOP



Chart 1 - Pattern A

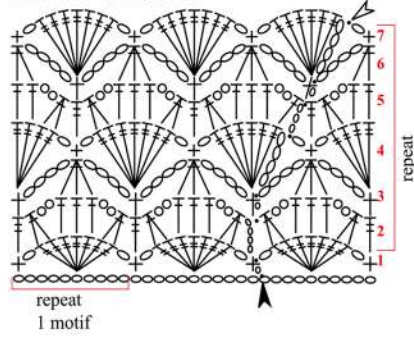
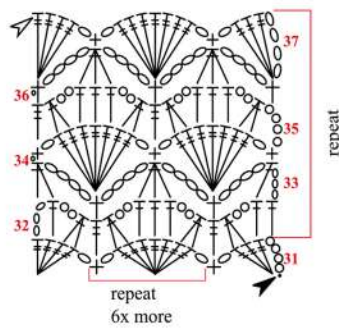


Chart 2 - Pattern B



Stitch key

- ch
- sl st
- + sc
- ┆ dc
- ┆ tr
- ┆ dc2tog
- ┆ dc3tog
- ▲ beginning
- △ end
- ↕ direction

Chart 3 - right & left shoulder

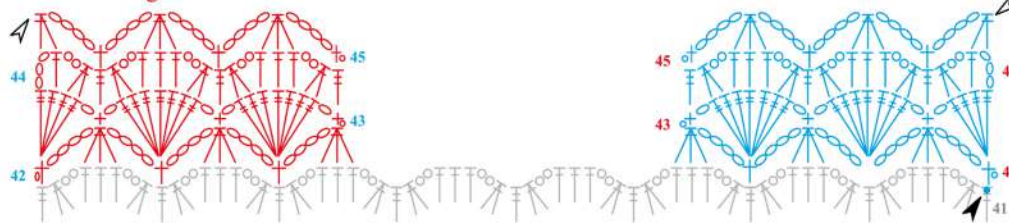
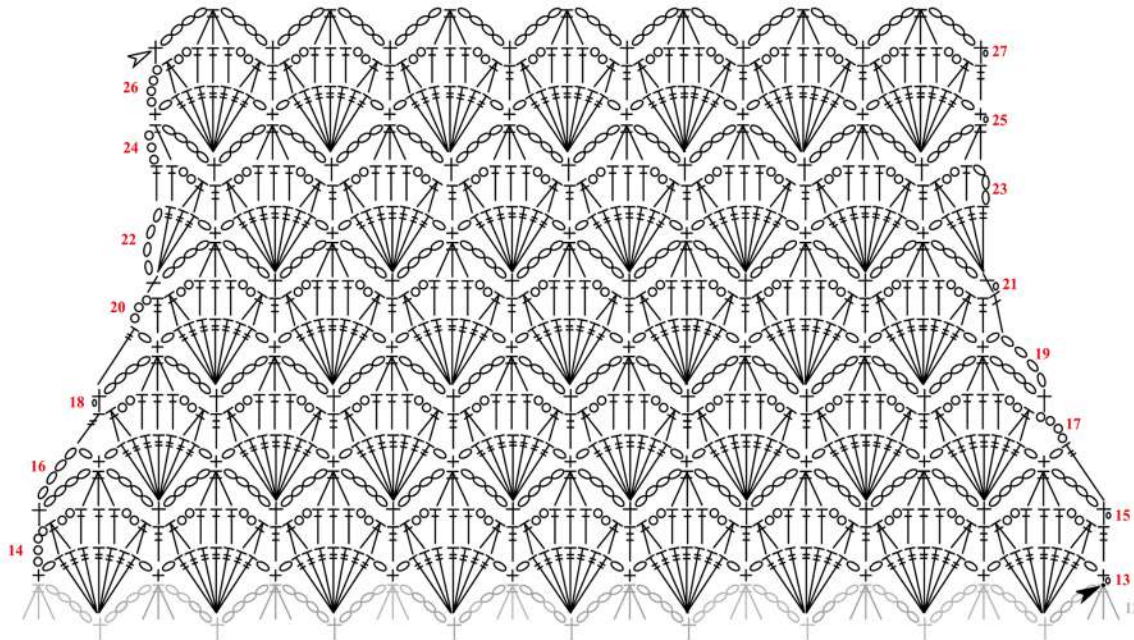
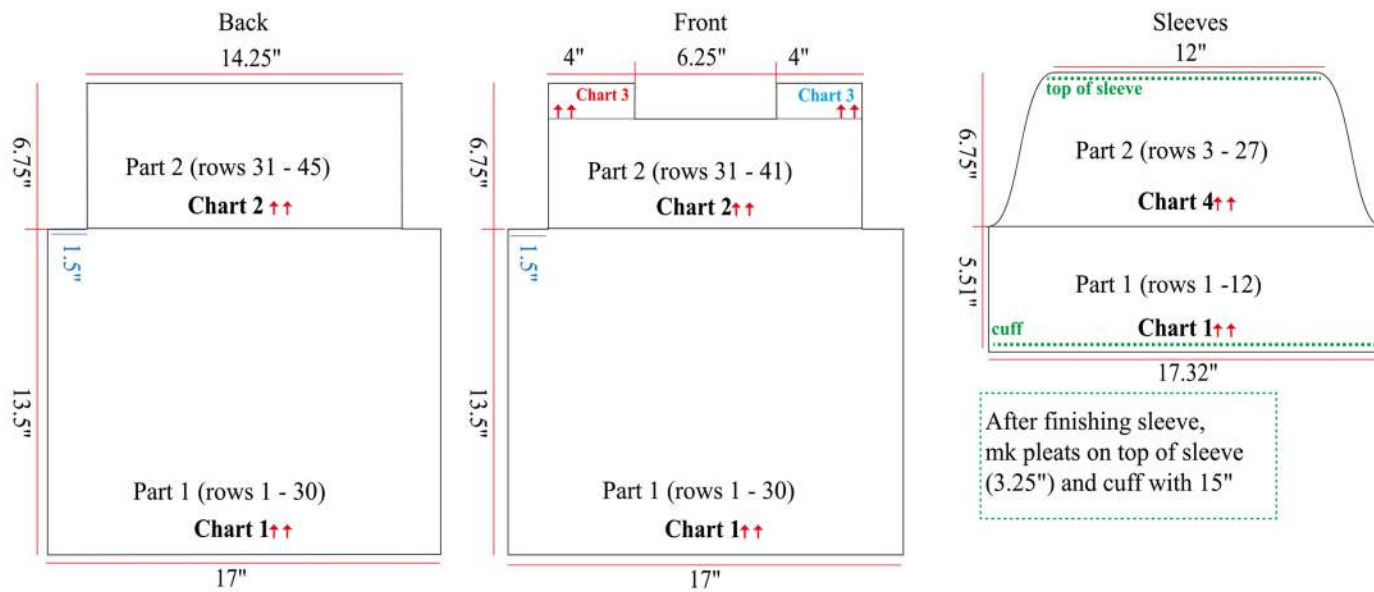


Chart 4 - Sleeve - part 2



Measurement chart



Preferred Yarn to use from Vardhman Knitting Yarn:



Cotone, Cool Knit, Twones



Pattern Credit : Circulo