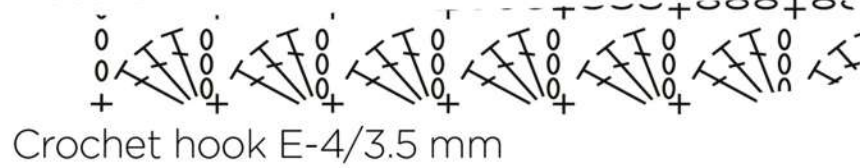


BED RUNNER



Created by Heloisa Mazoni
 Size: 71.75" x 25" (with fringes)
 Level: Easy

Material



Gauge: 16 dc x 7 R = 4"/10 cm using hook E-4.

Stitch glossary and abbreviations:

- stitch: st
- make: mk
- skip: sk
- chain: ch
- slip st: sl st
- single crochet: sc
- double crochet: dc
- Half Shell st: ch 3 + 3 dc in the same base st, 1 sc in the next sc.
- Increase: inc
- decrease: dec
- round: rnd
- end of row/rnd: eor.

Bed runner

Start with color
 Crochet back and forth.
 Ch 113 + 3 to turn.
 R1: 1 dc into 5th chain from hook, 1 dc in each chain.
 R2: ch 1, 1 sc into first dc, *ch 3, sk 3 dc, 1 sc in the next dc* 28 x
 R3: ch 1, 1 sc in the first sc, * ch 3, 3 dc in the same base st, 1 sc in the next sc* 28x
 R4: ch 6 in the first sc, *1 ch into chains of the Half Shell (see glossary or chart) st of row below, ch 3* 27x, 1 sc into chains of the Half Shell st of row below.
 Continue following chart 1 and this color sequence:

mk 8 more rows with color
 6 rows with color
 4 rows with color
 12 rows with color
 20 rows with color
 10 rows with color
 12 rows with color
 16 rows with color
 10 rows with color
 6 rows with color
 End with 7 rows with color

Finishing and fringes

Work on short ends only.
 Continue with color
 Follow chart 2.
 Fringes: Use color . Cut 8 strands to 15.75", insert hook into the 4 chain loop of chart 2, fold yarn in half, pull yarn into loop, pull edges and release (1 tassel) repeat as many times it is required.



BED RUNNER



Chart 1 - Bed runner

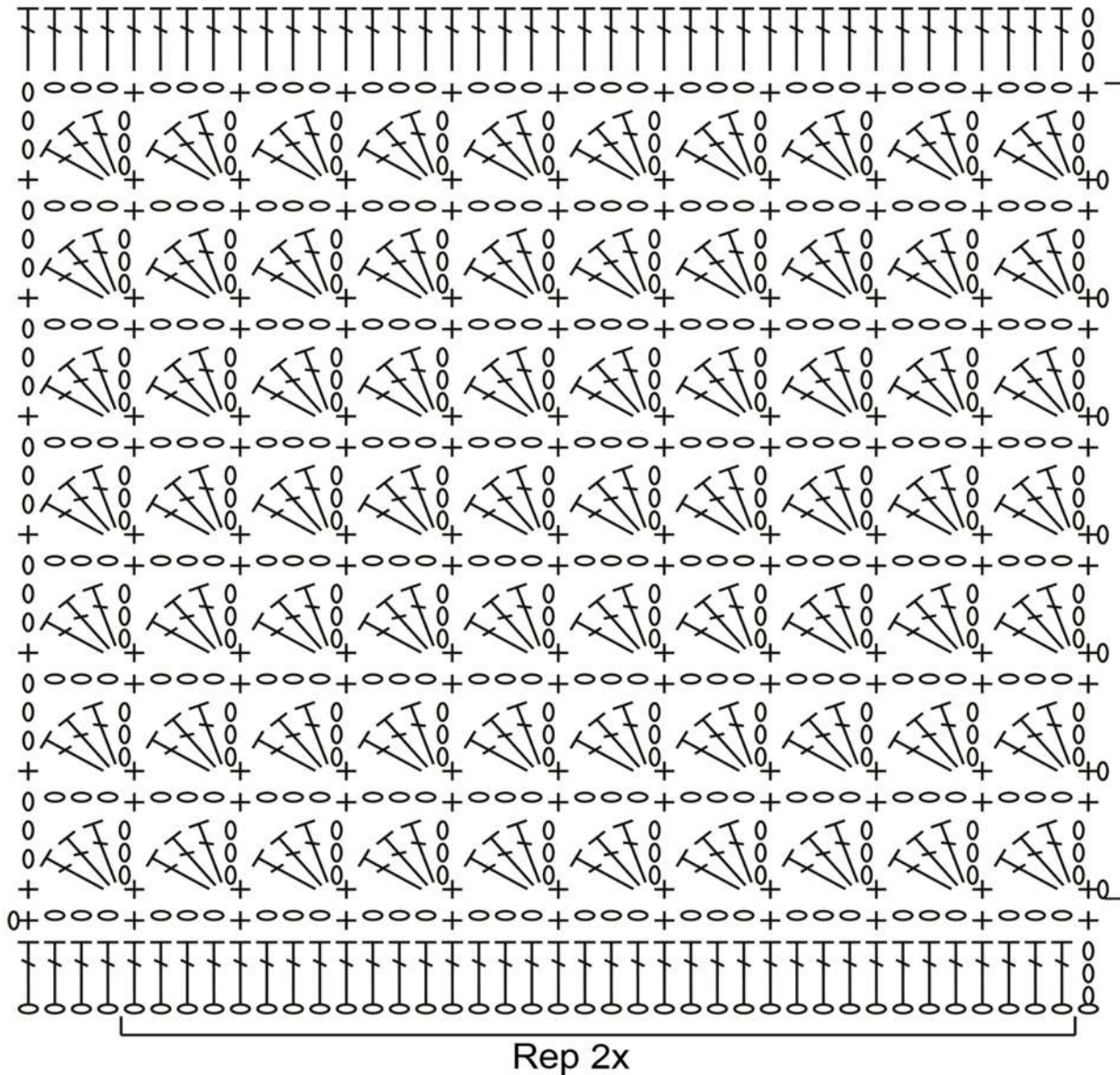
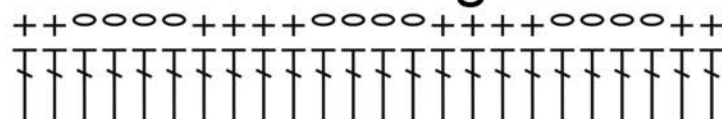


Chart 2 - Fringes



Stitch key

o ch

+ sc

┆ dc

Preferred Yarn to use from Vardhman Knitting Yarn:
Bluebell, Butterfly, Elegance



FREE PATTERN

BED RUNNER



PATNER

KNITTING