

FREE PATTERN COTTON CARDIGAN



PATMERN

CR00HEM

COTTON CARDIGAN



Material: Crochet hook 7, Natural Cotton Yarn, Tapestry Needle, Paper, pencil and scissors

Crochet stitch glossary and abbreviations: stitch: **st**; stitches: **sts**; repeat: **rep**; chain: **ch**; slip stitch: **sl st**; single crochet: **sc** - Single crochet into back loop of previous row; double crochet: **dc**; 3 double crochet cluster; Pattern A - Chart 1; Pattern B - Chart 2.

Gauge

16 sts x 14 rows = 4"/10 cm over pattern B - chart 2 using crochet hook 7.

Transfer measurement chart to paper to guide along work. Arrows indicate direction.

Part 1 – Back

Use hook 7 and Natural Cotton. Ch 91 and follow Pattern A - chart 1 - 29 motifs, rep sts. When back measures 8.25" start armhole dec: on each side every 2 rows: 1 motif (4x). When piece measures 22", end with 21 motifs and fasten off. Set piece aside.

Right front

Start at bottom. Ch 19 and follow Pattern A into this foundation chain (Pattern A - 5 motifs), follow chart 1 + rep sts up to 8.25" and then start armhole dec: dec on the left side every 2 rows 1 motif (4x). At 22" end piece with 1 motif, fasten off and let aside.

Left front

Follow same instructions as right, invert sides for decreases.

Part 2

Use hook 7 and Natural Cotton to join back and front with a 5" chain cord. This cord will be the base for sleeves and neckline edge.

Part 3

Use hook 7 and Natural Cotton, join at armhole and make sleeves, follow Pattern A - 42 motifs, dec on each side, every 2 rows 1 st (13x). When sleeve is 16.25" long, end piece with 16 motifs and fasten off.

Cuff

Use hook 7 and Natural Cotton. Ch 10 and follow Pattern B - Chart 2, rep sts into this foundation chain for 8" and fasten off. Switch to tapestry needle and sew cuff onto lower part of sleeves through WS. Make another one and sew onto other sleeve.

Assembly & finishing

Use tapestry needle and Natural Cotton to sew sides (8.25"), sew sleeves and cuffs (18.5")

Part 4 – Hem

Use hook 7 and Natural Cotton. Ch 10 and into this foundation chain, follow Pattern B - chart 2, rep sts up to 29" and fasten off. Switch to tapestry needle and sew hem through the WS.

Part 5 - Neckline (front & back edge)

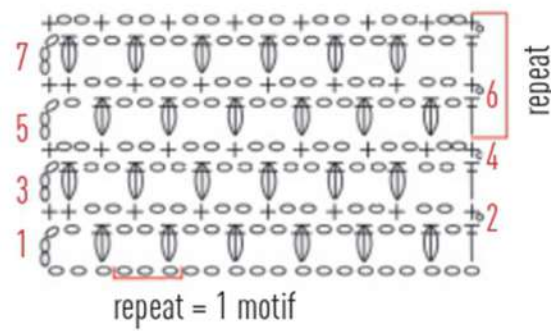
Use hook 7 and Natural Cotton, and join yarn at the right front bottom and work around neckline (back & front left bottom), follow Pattern B - 223 sts – chart 2, rep sts for 4.75" and fasten off.

Created by: Angela Schmitt

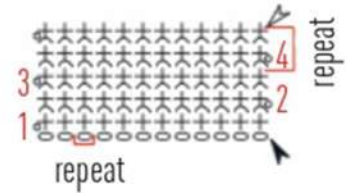
Stitch key

- ch
- + sc
- ✱ sc into back loop of previous row st
- ┆ dc
- ⊖ 3 dc cluster
- ▲ beginning
- △ end

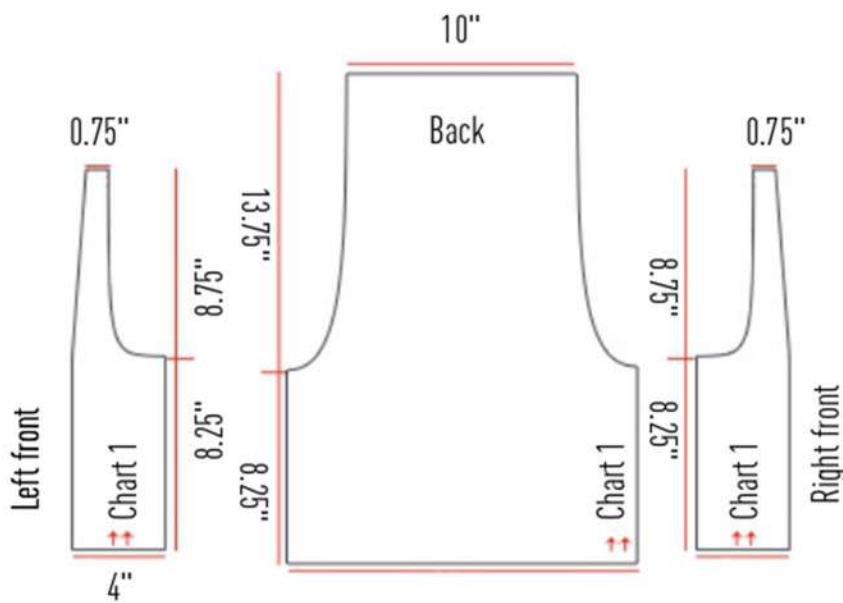
Pattern A - chart 1



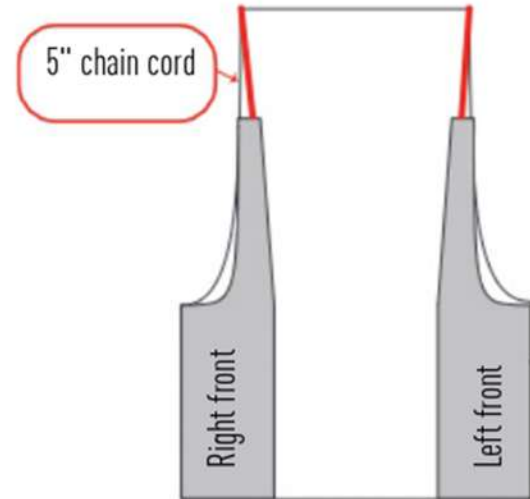
Pattern B - chart 2



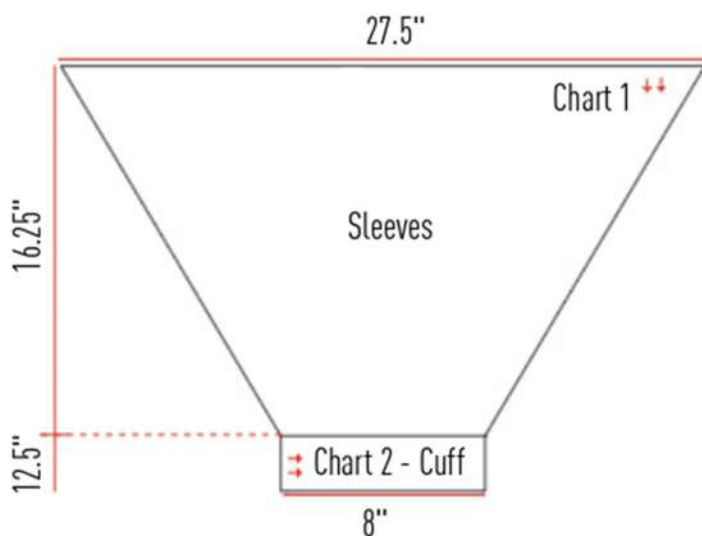
Part 1: Back and front are worked separately



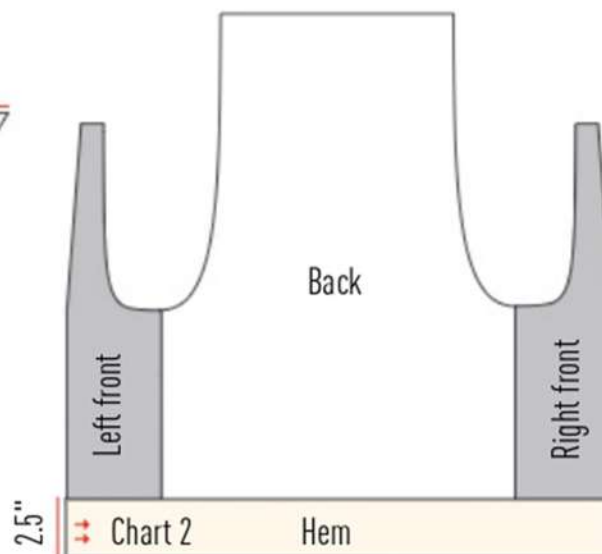
Part 2: Join back & fronts with a 5" chain cord before start sleeves



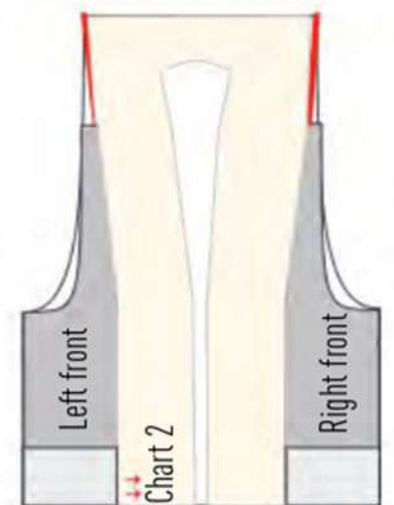
Part 3: Sleeves



Part 4: Hem



Part 5: Neckline front & back edge



Disclaimer: Measurements are approximate due to differences between centimeters and inches. All care has been taken to allow accurate completion of the pattern.

Preferred Yarn to use from Vardhman Knitting Yarn:
Cotone, Cool Knit, Cotton Crush

