

FREE PATTERN

GRANNY BASKET



Pattern Credit : Schachenmayr Since 1822

GRANNY BASKET



Size: approx. 8¼" (21 cm) in diameter, 6" (15 cm) high.

Materials: 150 g of Cotton Crush Yarn, Cotone Yarn or Cool Knit Yarn in Sand, Mud, Dahlia, Peach, Reseda shade with crochet hook size 2.5 mm (US-1)

Granny Squares: Work in rnds following the chart. Begin each rnd with 3 ch to replace the 1st tr and close each rnd with 1 slst in the upper ch of the 3 replacement chs. In each of the 2nd and 3rd rnds, join a new color. For color placement, see below.

Crochet pattern: Work double crochet/dc (in US = single crochet) in rnds. Begin each rnd with 2 ch to replace the 1st dc and close each rnd with 1 slst in the upper of the 2 replacement chs.

Color placement:

1st Granny Square: Crochet 1st rnd with Sand, 2nd rnd with Peach, and 3rd rnd with Mud.

2nd Granny Square: Crochet 1st rnd with Dahlia, 2nd rnd with Sand, and 3rd rnd with Mud.

3rd Granny Square: Crochet 1st rnd with Reseda, 2nd rnd with Dahlia, and 3rd rnd with Mud.

4th Granny Square: Crochet 1st rnd with Peach, 2nd rnd with Reseda, and 3rd rnd with Mud.

5th Granny Square: Crochet 1st rnd with Dahlia, 2nd rnd with Peach, and 3rd rnd with Mud.

6th Granny Square: Crochet 1st rnd with Reseda, 2nd rnd with Dahlia, and 3rd rnd with Mud.

7th Granny Square: Crochet 1st rnd with Sand, 2nd rnd with Reseda, and 3rd rnd with Mud.

8th Granny Square: Crochet 1st rnd with Peach, 2nd rnd with Sand, and 3rd rnd with Mud.

9th Granny Square: Crochet 1st rnd with Reseda, 2nd rnd with Peach, and 3rd rnd with Mud.

10th Granny Square: Crochet 1st rnd with Dahlia, 2nd rnd with Reseda, and 3rd rnd with Mud.

Gauge: 22 dc and 21 rnds in crochet pattern = 4" x 4" (10 x 10 cm).

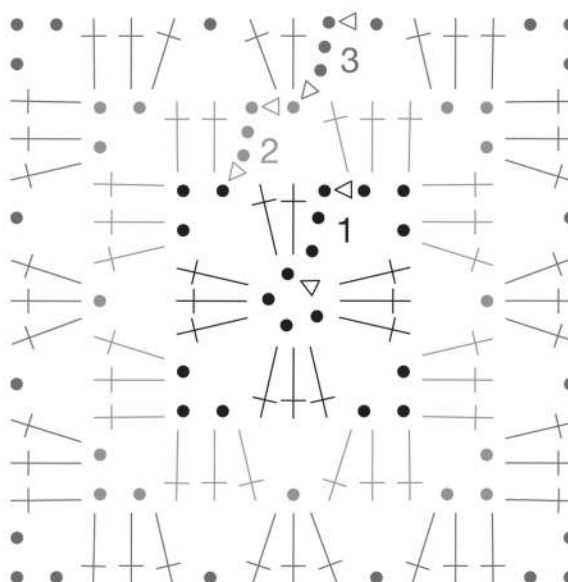
1 Granny Square = 2½" x 2½" (6 x 6 cm).

INSTRUCTIONS

Following the chart, crochet 10 Granny Squares in the given color orders. Hide all yarn ends in areas of the same color.

Sew the Granny Squares together in the given order. To do this, lay the crocheted pieces together, right sides facing, and sew the back

Chart



Legend

- = 1 chain (ch)
- △ = 1 slip stitch (slst)
- † = 1 treble (tr)/ in US = double crochet (dc)

GRANNY BASKET



loops of the sts together, with straight stitches.
Along the upper edge, crochet 1 rnd of dc with Mud, working 13 dc on each Granny Square. Then with Reseda work 1 rnd of shrimp stitch (= dc worked from left to right).

For the basket, use Mud to work dc on the back side of the Granny Squares, working 13 dc on each Granny Square = 130 dc in the rnd. Continue working in rnds, but beginning with the 2nd rnd, insert the hook only in the back loops of the dc of the preceding rnd.

When the work reaches a total height of 9" (23 cm), begin the base, inserting the hook in both loops of the dc and decreasing as follows:

Rnd 1 and all following uneven rnds: Work 1 dc in each dc of the preceding rnd = 130 dc in the 1st rnd.

Rnd 2: Crochet off every 12th and 13th dc of the preceding rnd together and work 1 dc in each other dc of the preceding rnd = 120 dc.

Rnd 4: Crochet off every 11th and 12th dc of the preceding rnd together = 110 dc.

Rnd 6: Crochet off every 10th and 11th dc of the preceding rnd together = 100 dc.

Rnd 8: Crochet off every 9th and 10th dc of the preceding rnd together = 90 dc.

Rnd 10: Crochet off every 8th and 9th dc of the preceding rnd together = 80 dc.

Rnd 12: Crochet off every 7th and 8th dc of the preceding rnd together = 70 dc.

Rnd 14: Crochet off every 6th and 7th dc of the preceding rnd together = 60 dc.

Rnd 16: Crochet off every 5th and 6th dc of the preceding rnd together = 50 dc.

Rnd 18: Crochet off every 4th and 5th dc of the preceding rnd together = 40 dc.

Rnd 20: Crochet off every 3rd and 4th dc of the preceding rnd together = 30 dc.

Rnd 22: Crochet off every 2nd and 3rd dc of the preceding rnd together = 20 dc.

Rnd 24: Crochet off every 2 dc of the preceding rnd together = 10 dc.

Cut the yarn, run it through the remaining 10 dc, and pull firmly closed.

Hide all yarn ends.

Fold the upper edge of the basket to the outside, approx. 3¼" (8 cm) wide, so that the right sides of the Granny Squares lie on the outer side.

ABBREVIATIONS

rnd = round

st(s) = stitch(es)

Preferred Yarn to use from Vardhman Knitting Yarn:
**COTONE YARN, COOL KNIT YARN or
COTTON DREAMZ YARN**

