

FREE PATTERN

MARINE DRESS



PATTEBN

CRONPTM

MARINE DRESS



Advanced

Size: 6

Create by Samara Varella

Pattern translation: Adriana Baiocco

Material

6 balls of

Crochet hook 0

Tapestry needle

Fabric to line dress

Paper, pencil and scissors.

Stitch glossary and abbreviations

stitch: st

repeat: rep

chain: ch

slip st: sl st

single crochet: sc

double crochet: dc

picot: ch 3, 1 sl st into the 1st ch.

Pattern A - follow chart 1

Pattern B - follow chart 2

Pattern C - follow chart 3

Cord - follow chart 4

Pattern D - follow chart 5

Crochet edge - follow chart 6

Gauge

26 sts x 10 rows = 4"/10 cm using hook 0.

Transfer measurement chart to paper to guide you along work. Arrows in the measurement chart indicate direction.

Back & Front

They are worked together.

Part 1: Use crochet hook 0 and Anne. Start piece at hips, crochet in the round. Ch 208, 1 sl st to close and into this foundation ch follow Pattern (A) - chart 1 and rep sts for 11" up to waistline and then work back and forth follow chart 2, rep sts and the measurement chart to form armholes and neckline. When you reach 28.25", fasten off.

Part 2: Join yarn into foundation ch and work skirt. Front & back are worked tog, crochet in the round Follow Pattern C - chart 3 and rep sts for 15.75", total of 16 motifs in this part. Continue on Pattern (C) chart 3 and rep sts for 10", total of 32 motifs in this part, fasten off and set aside.

Cord

Join the yarn into neckline, upper back and make two straps: follow chart 4 and rep. sts for 17". Tie straps around neck.

Sleeves

Use hook 0/1.75mm and Anne. Start at the top and work back and forth. Ch 25 and follow Pattern (B) - chart 1 and rep sts and the measurement chart. Fasten off when you reach 11", make the other sleeve and set them aside. Close sleeves and sew them around armholes.

Crochet edge

Rows 1 -3: Follow chart 6 and rep. sts, only the sc from the 1st row are into the skirt. Line dress according to measurement chart.



Chart 3 - Pattern C

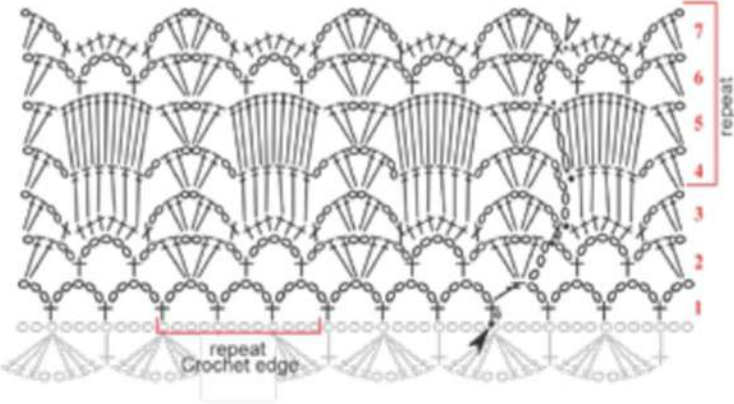


Chart 4 - Cord

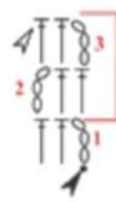


Chart 5 - Pattern D

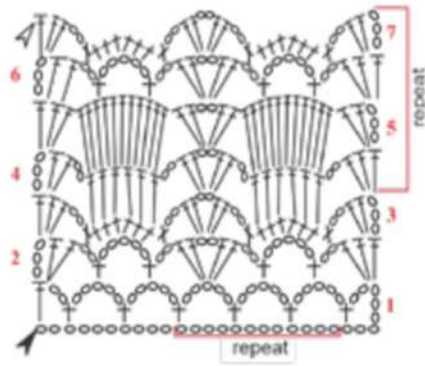
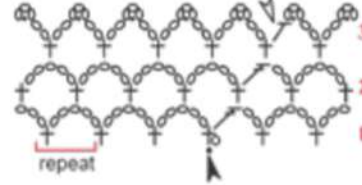


Chart 6 - Crochet border



Stitch Key

- ch
- sl st
- + sc
- | hdc
- ┆ dc
- ⊗ picot
- ▲ beginning
- △ end
- ↔ direction

Chart 1 - Pattern A

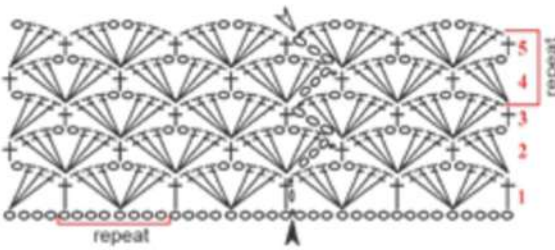
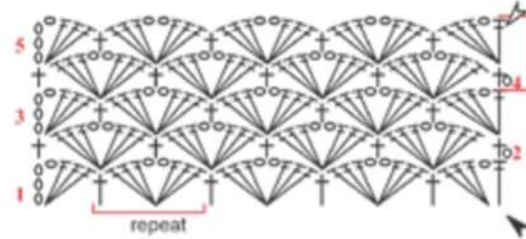
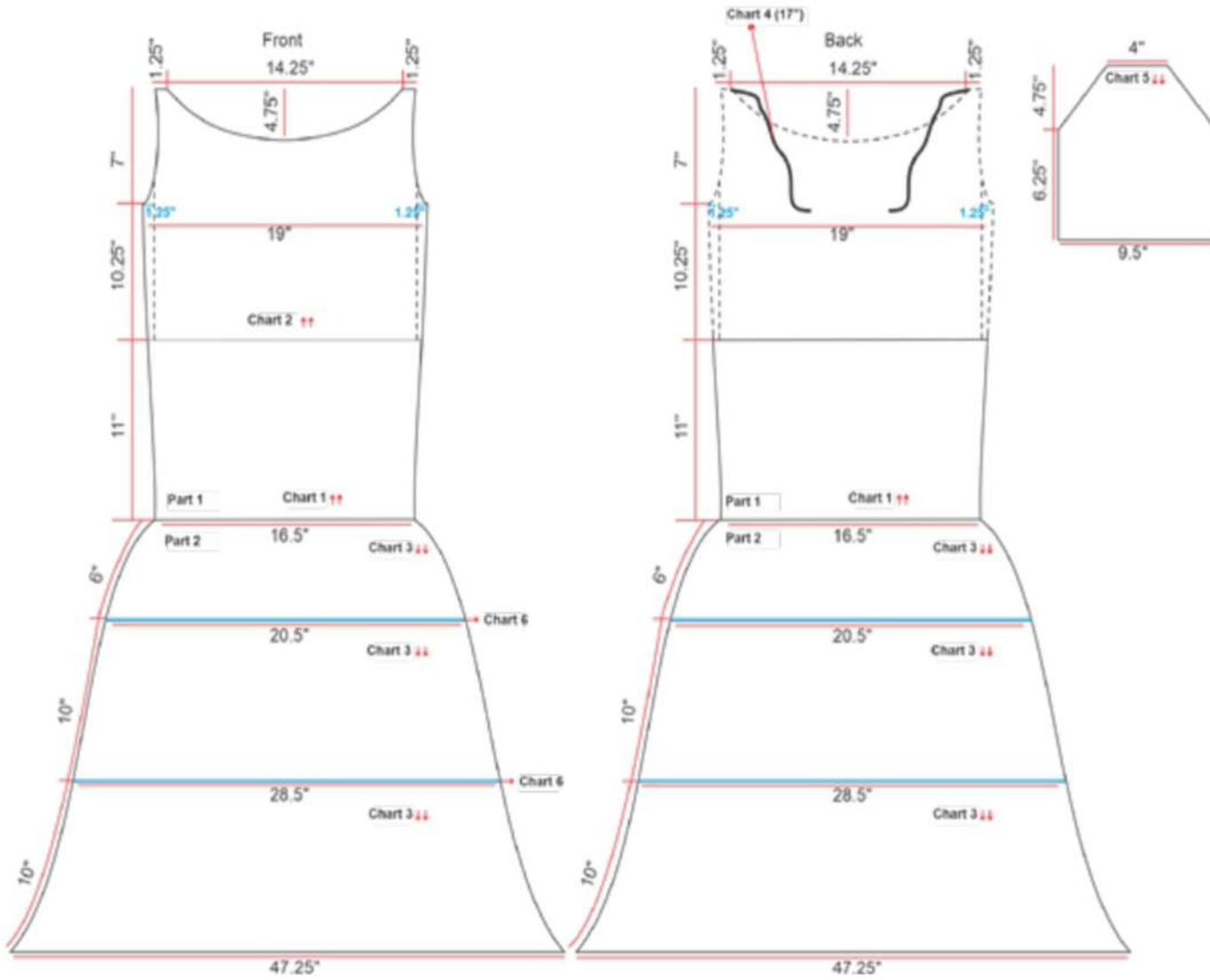


Chart 2 - Pattern B



Measurement chart



Preferred Yarn to use from Vardhman Knitting Yarn:

Cotone, Cool Knit

