

FREE PATTERN

# OFF - WHITE BAG



Pattern Credit : Circulo

# OFF-WHITE BAG



## Off-white bag

**Created by** Kathia Moraes

**Size:** 14.25" width 12.5" tall

**Level of difficulty:** ● ● ○

### Material

Crochet hook H/5mm

Tapestry needle

Scissors and measuring tape

Fabric to line bag

Braid cotton rope to tie bag

**Gauge:** 15 dc x 8 R = 4"/10 cm using hook H.

### Disclaimer

Measurements are approximate due to differences between centimeters and inches, needle sizes and tension (gauges). All care has been taken to allow accurate completion of the pattern. We apologize for any inconvenience.

### Stitch glossary and abbreviations:

stitch: st

skip: sk

chain: ch

slip st: sl st

single crochet: sc

half double crochet: hdc

double crochet: dc

Increase: inc

decrease: dec

round: rnd

Pattern 1 - follow chart

Pattern 2 - follow chart

Strap - follow chart

Base - follow chart

### Base

Crochet in the round. Close rnds with 1 sl st and start rnds with 3 chains.

Ch 29, follow chart. Once the chart is completed make 2 rnds in dc = 102 dc in each rnd. Make the first rnd into the back loop of the sc of the base. Follow Pattern 1, rep from \* to \* horizontally (17x). At 8.75" follow Pattern 2 - make 6 rnds. Fasten off.

### Strap

Crochet back and forth.

Make a foundation chain - 26.5" long.

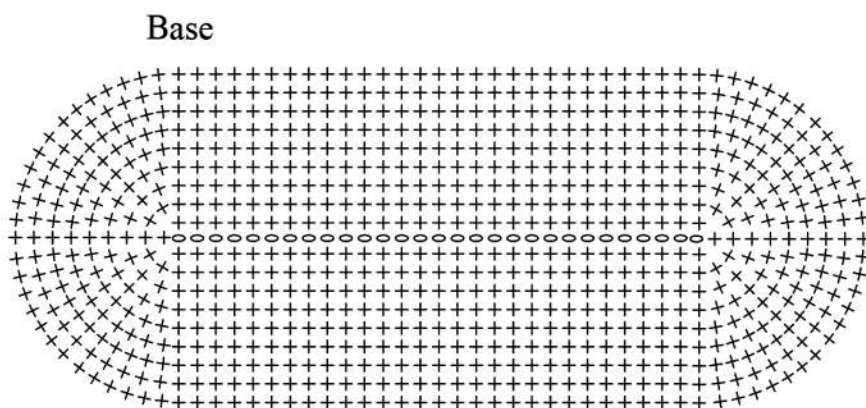
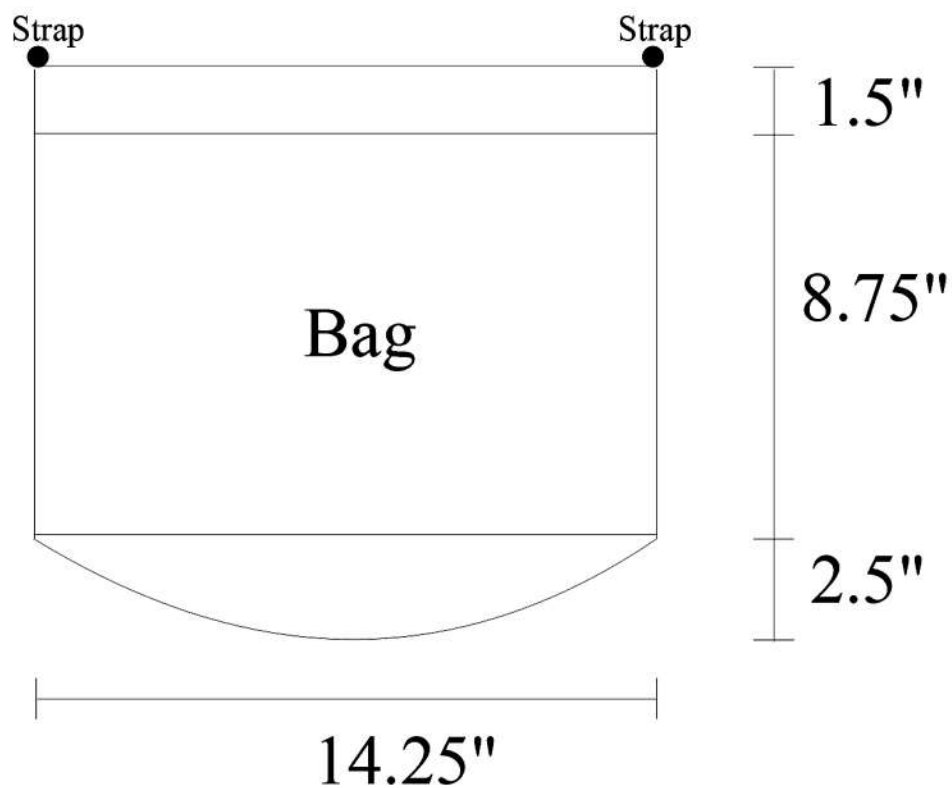
Make 6 rows in hdc. Fasten off. Work vertically with sl sts facing up covering the entire strap.



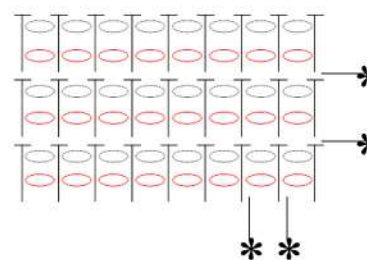
### Assembly and finishing

Line bag. Leave 1.50" border top without fabric. Sew strap onto each side into the second to the last rnd of Pattern 2. (see measurement chart) Insert Braid Cotton rope into the gaps of the last rnd of Pattern 1 (see picture).

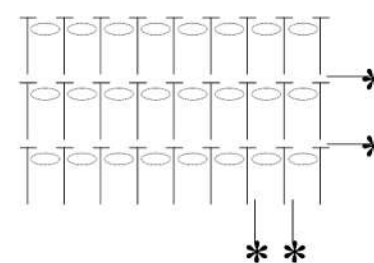
# OFF-WHITE BAG



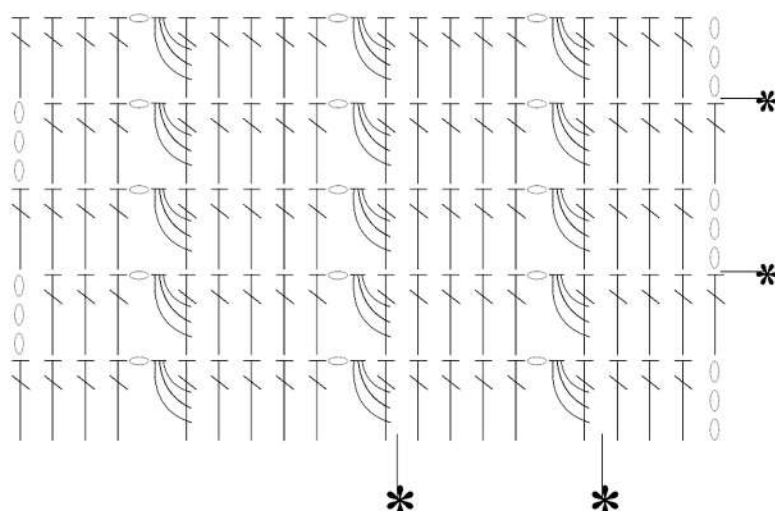
Strap



Pattern 2



Pattern 1



## Stitch key

- = ch
- ⊕ = sc
- ⊥ = hdc
- ⊥ = dc
- ⌋ = 3-dc closed together in the previous dc
- = chains on the wrong side

Rep from \* to \*

Preferred Yarn to use from Vardhman Knitting Yarn:

# Cotton Plus

