



FREE PATTERN DOWNLOAD ↓ Scarlet Woolie



Scarlet Woolie

Material: 6 balls Knitting needles 8, Cable needle
Tapestry needle, 2 buttons 0.4", Paper, pencil, scissors and measuring tape.

Abbreviations: **CO:** cast on, **BO:** bind off, **rep:** repeat, **dec:** decreases, **inc:** increases, **RS:** right side, **WS:** wrong side, **CN:** cable needle.

Knitting stitch glossary: Pattern 1 - chart 1, Pattern 2 - chart 2, Pattern 3 + variations A,B,C & D - chart 3, Pattern 4 - chart 4, Garter st - chart 5, Stockinette st - chart 6.

Gauge: 20 S x 18 R = 4"/10 cm over Pattern 1 using needles 8.

Transfer measurement chart to paper to guide you along. Arrows indicate direction.

Back: CO 88 sts onto needles 8. Start at hem, follow Pattern 1 - chart 1 and rep sts up to 20.5", BO and set piece aside.

Front: CO 88 sts onto needles 8. Start at hem. Follow Patterns 2,3 and 4 - charts 2, 3 & 4, rep sts in this sequence: 23 sts (chart 2), 4 sts (chart 3 - D), 2 sts (chart 3 - D), 8 sts (chart 3 - C), 2 sts (chart 3 - A), 10 sts (chart 3 - B), 2 sts (chart 3 - A), 8 sts (chart 3 - C), 2 sts (chart 3 - A), 4 sts (chart 3 - D) and 23 sts (chart 4). When piece reaches 18.5 " start neckline dec. BO 18 central sts and work each side separately (35 sts each), dec on each side of neckline, every 2 rows: 3 sts (1x), 2 sts (1x) and 1 st (1x). BO 29 sts on each shoulder when front measures 20.5" and set it aside.

Sleeve: CO 40 sts onto needles 8. Start at cuff. Follow chart 5 and work in Garter sts for 1.25". Inc 30 sts in the last garter st row, alternating inc = 70 sts. Next row, follow Pattern 1 - chart 1 and rep sts. BO when sleeve reaches 17.5". Make the other sleeve and set them aside.

Assembly: Use tapestry needle and Mollet to sew left shoulder(6.25"). Leave right shoulder open to make collar.

Collar: Use needles 8 and pick up 68 sts along neckline and follow Pattern 6, rep sts for 2". BO and leave a tail to sew (12"). Use this tail and tapestry needle to sew collar (2") and right shoulder (6.25"). Sew sides (13.75"), leaving a 6.75" opening for arms. Make 2 pinch pleats at the bottom of sleeves, 3.25" from edges. Sew sleeves, leave a 3.25" opening on bottom sides. Sew sleeves onto body and buttons on cuffs.

Chart 1 - Pattern 1

P.S.: odd rows (RS), even rows (WS)

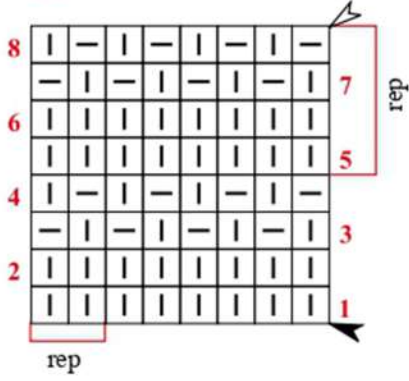


Chart 4 - Pattern 4

P.S.: odd rows (RS), even rows (WS)

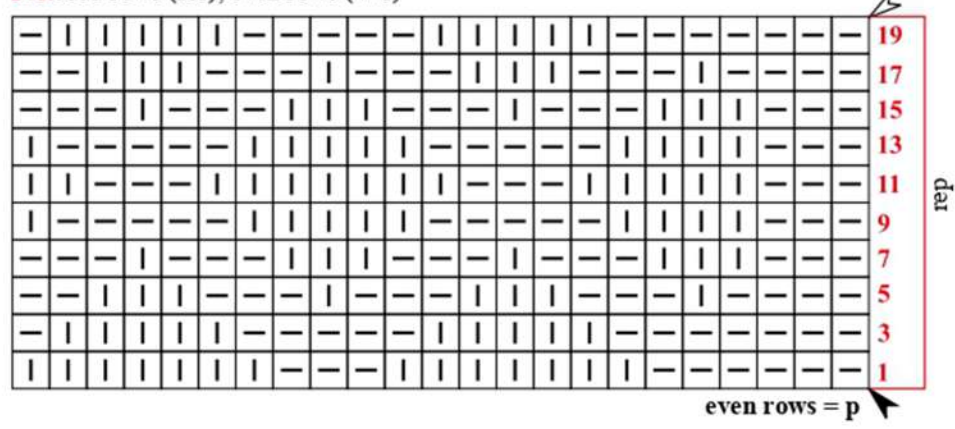
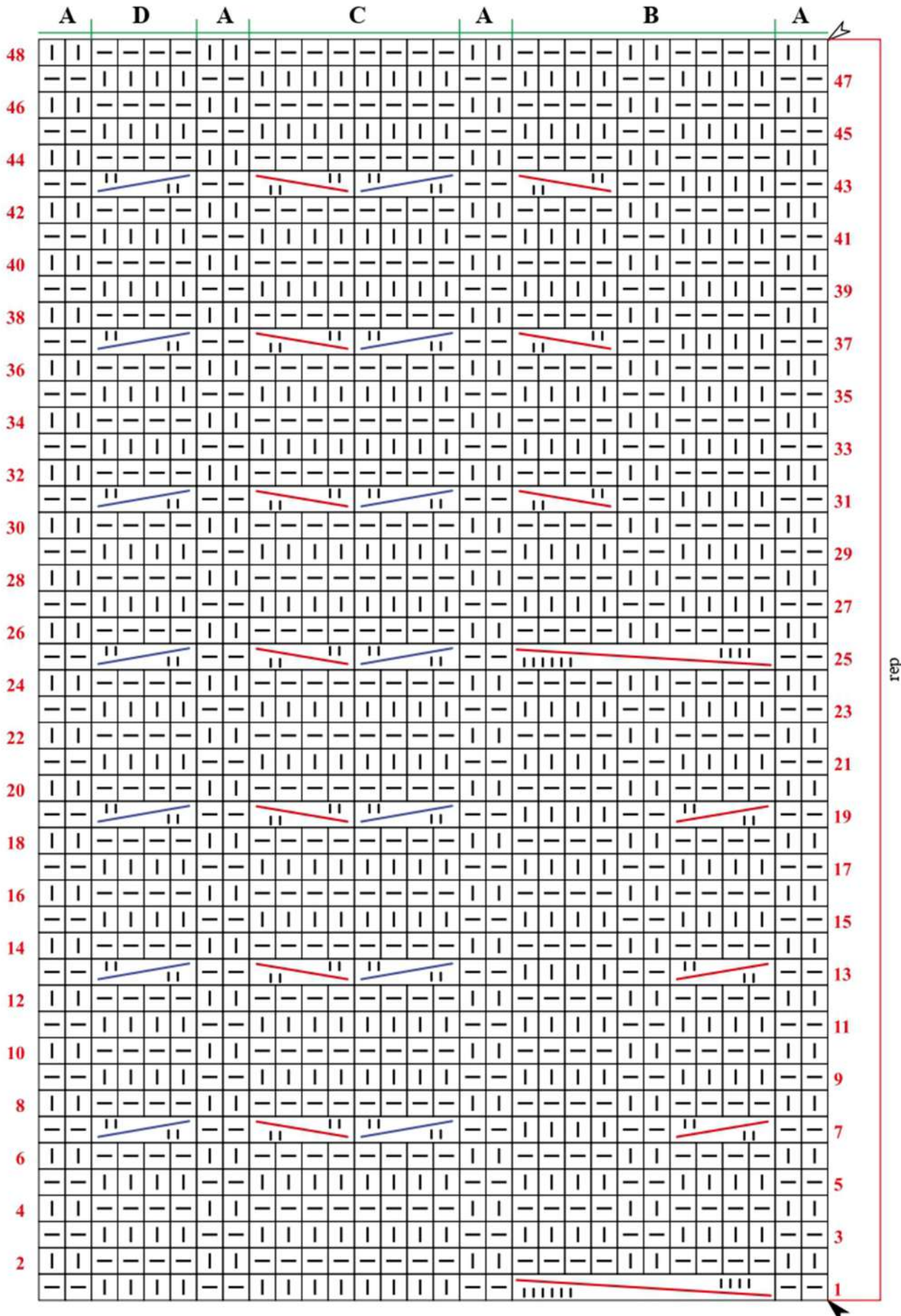


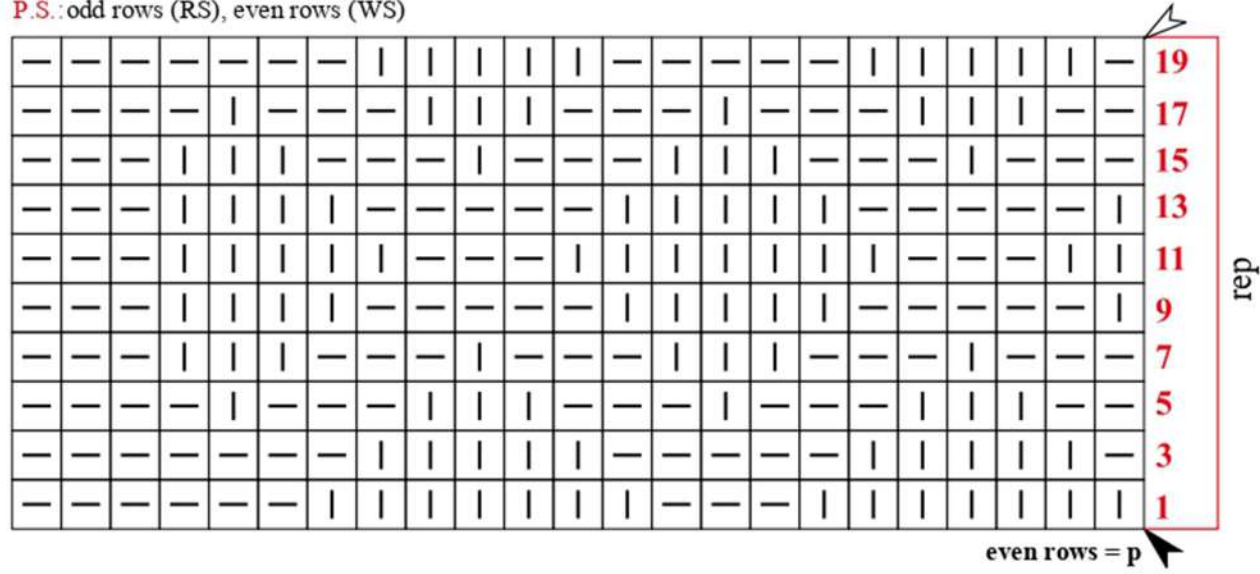
Chart 3 - Pattern 3

A = RS = p, WS = k **B** = Elongated double cables
C = Double cable **D** = Simple cable



Pattern 2 - chart 2

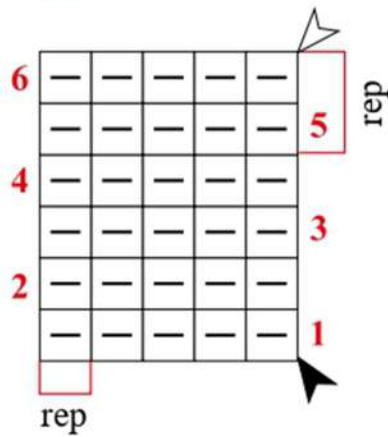
P.S.: odd rows (RS), even rows (WS)



Garter st - chart 5

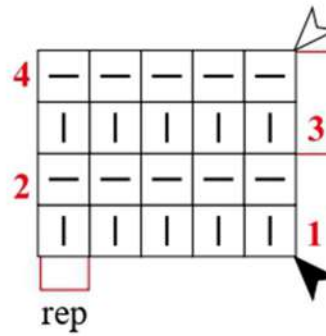
(back & forth)

P.S.: odd rows (RS), even rows (WS)



Stockinette st - chart 6

P.S.: odd rows (RS), even rows (WS)



Stitch key:

□ | k

□ - p

sl 2 to CN, hold in front, k2, then k2 from CN

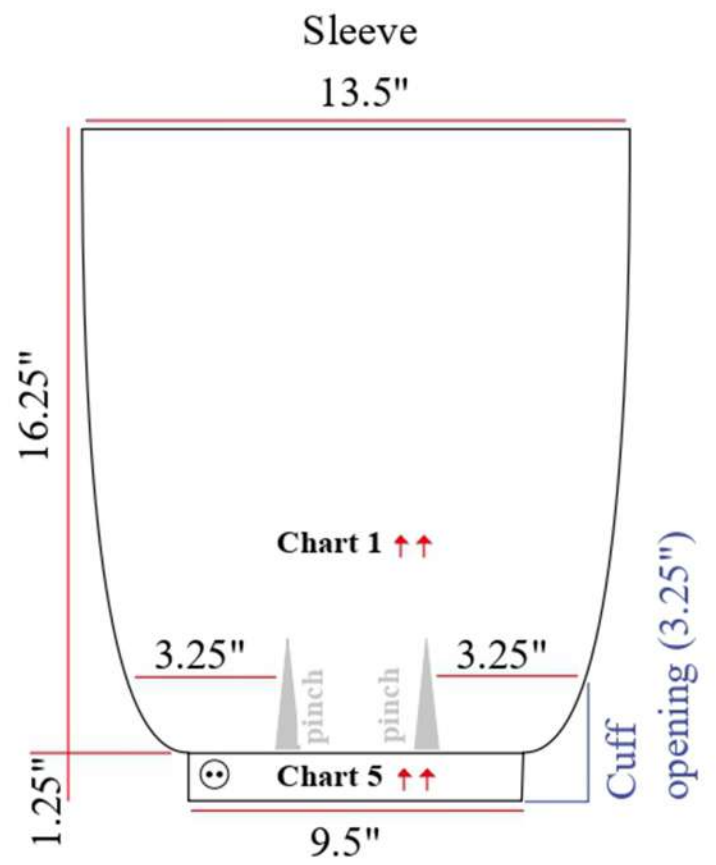
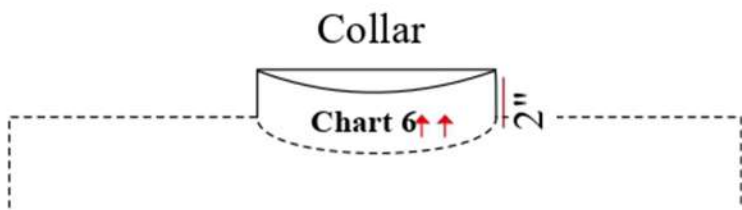
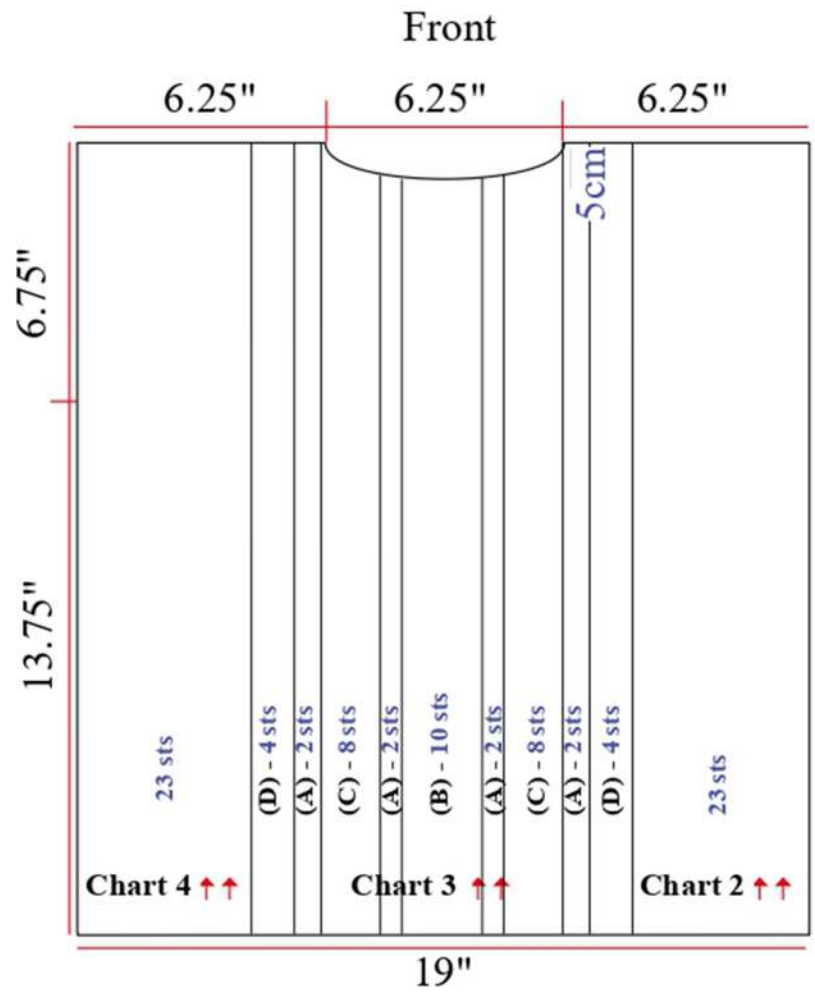
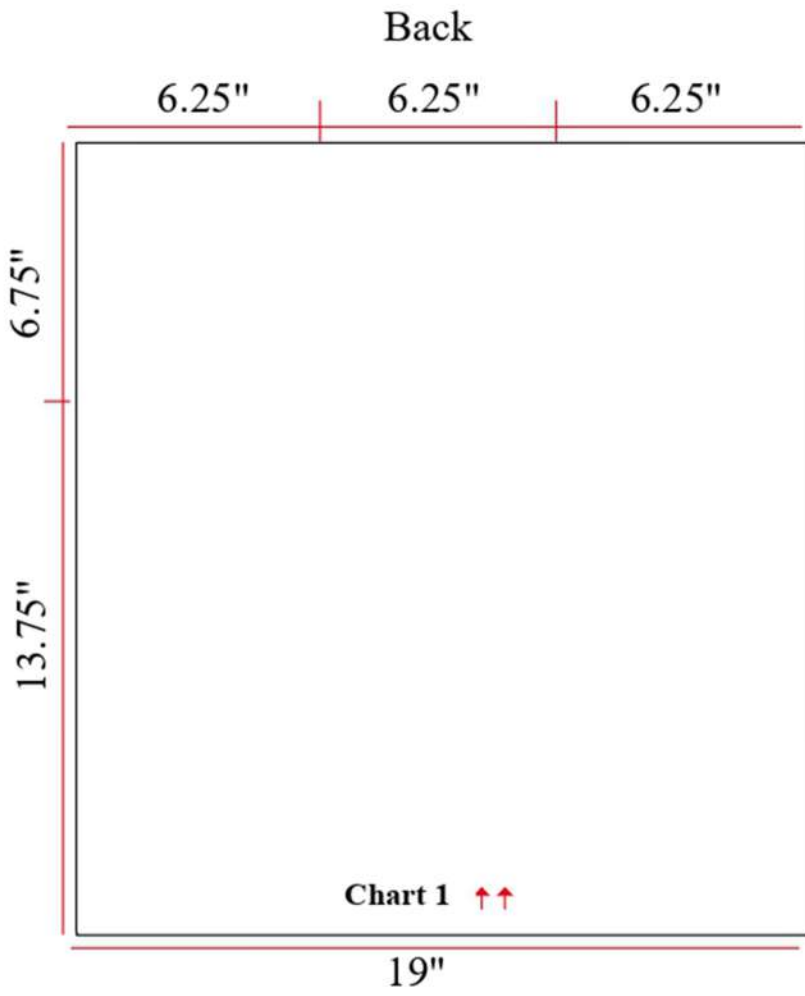
sl 2 to CN, hold in back, k2, then k2 from CN

sl 4 to CN, hold in front, p2, k4, then k4 from CN

▲ beginning

△ end

↑↑ direction



Preferred Yarn to use from Vardhman Knitting Yarn:
Brilon, Bluebell, Bigboss

