



FREE PATTERN DOWNLOAD ↓ Choco Pullover



CHOCO PULLOVER



Level: Intermediate

Material

Circular knitting needles US 10.5/6.5 mm 29" long
Tapestry needle
Measuring tape & scissors

Stitch glossary and abbreviations:

st/sts: stitches
CO: cast on
BO: bind off
rep: repeat
mk: make
dec: decreases
inc: increases
RS: right side
WS: wrong side
K: knit
P: purl
skp: sl 1, k1, pass sl st over.
Pattern A - follow chart 1
2x2 Rib st - follow chart 2
Pattern B - follow chart 3

Gauge: 15 S x 19 R = 4"/10 cm over Pattern A using needles 10.5/6.5 mm

Disclaimer: Measurements are approximate due to differences between centimeters and inches, needle sizes, and tension. All care has been taken to allow accurate completion of the pattern. All care has been taken to ensure the accuracy of our patterns; the occasional error is inevitable though. We apologize for any inconvenience.

Back

Start at waistline.
CO 70 sts onto needles 10.5/6.5 mm.
Follow Pattern A - chart 1 and rep sts up to 21.75". BO all sts.

Front

Start at waistline.
CO 70 sts onto needles 10.5/6.5 mm.
Follow Pattern A - chart 1 and rep sts up to 19.25". Start neckline shaping: BO the central 10 sts and work on the 30 sts of each side separately. Dec on the neckline side every 2 rows: 2 sts (1x) and 1 st (6x). At 21.75" BO the remaining 22 sts of each shoulder.

Sleeves (make 2)

Start at cuff.
CO 22 sts onto needles 10.5/6.5 mm.
Follow chart 2 - 2x2 Rib st and rep sts up to 2.5" and then follow Pattern B - chart 3 and rep sts. Inc 50 sts evenly spaced in the first row of the Pattern B = 72 sts. Inc 50 sts evenly spaced in the second row = 122 sts. Follow Pattern B up to 16.25" BO all sts. Make the other sleeve and set them aside.

Assembly and finishing

Use tapestry needle and Luar to close left shoulder (5.25"), leave right shoulder open to make collar.

Collar: Use knitting needles 10.5/6.5 mm to pick up 84 sts around neckline. Follow chart 2 - 2x2 Rib st and rep sts up to 1.5". BO all stitches with a long tail (approx. 10"). Insert this tail into tapestry needle and close collar and right shoulder.

Sew body sides (10"), leave 12" open for arms. Close sleeves (16") and sew them onto body.

CHOCO PULLOVER



Chart 1
Pattern A

Note: odd rows (RS)
even rows (WS)

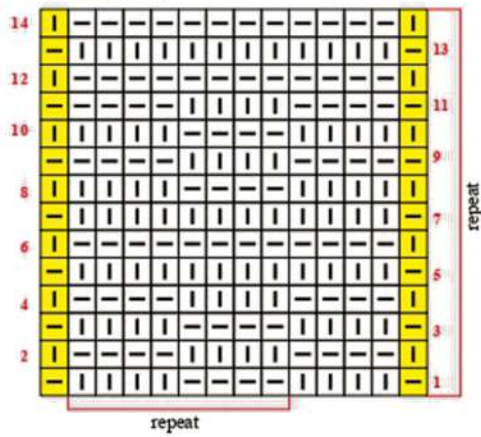
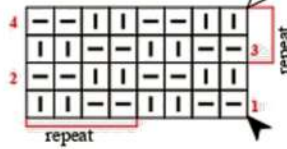


Chart 2 - 2x2 Rib st

Note: odd rows (RS)
even rows (WS)

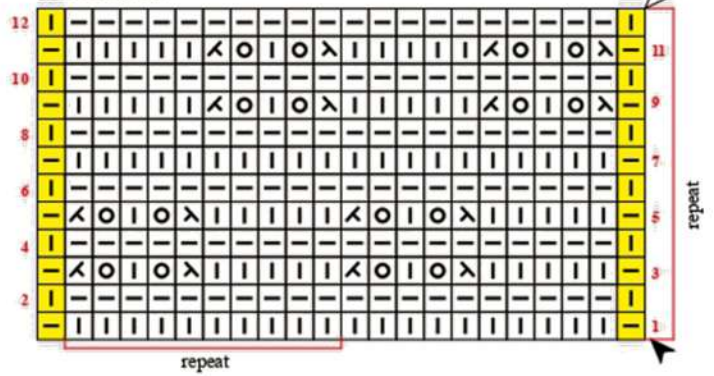


Stitch key

- purl
- knit
- k2tog
- skp
- yo
- edge st
- beginning
- end
- direction

Chart 3
Pattern B

Note: odd rows (RS)
even rows (WS)

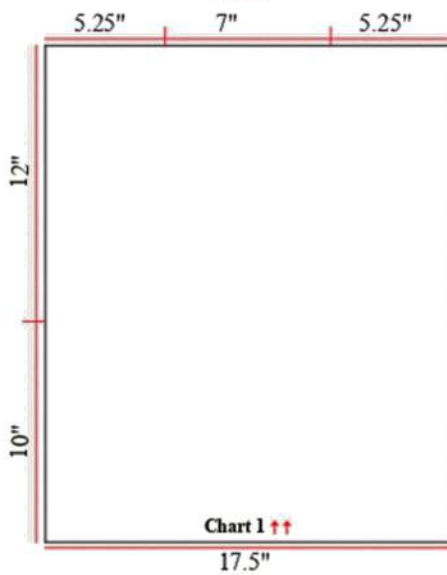


Collar

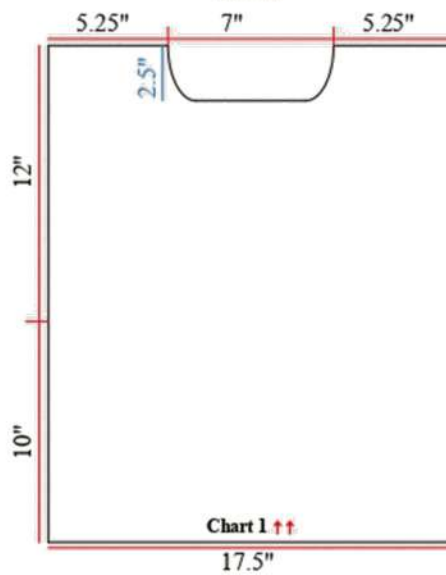


Measurement chart

Back



Front



Sleeve
23.75"

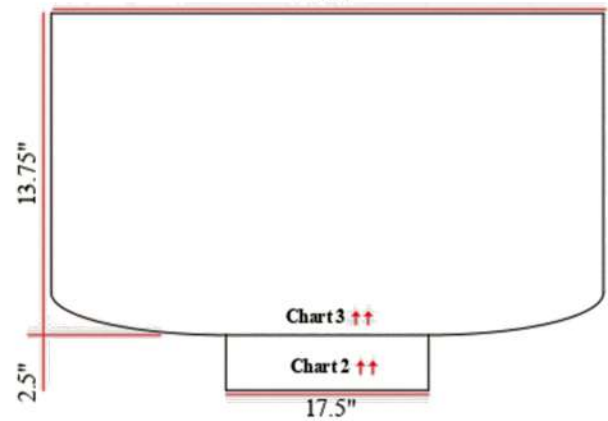


Chart 3

Chart 2

Preferred Yarn to use from Vardhman Knitting Yarn:

Cool Knit and Cotone

