



# FREE PATTERN DOWNLOAD ↓ Gray Handbag



# GRAY HANDBAG

**Size: 19.75" width x 13.75" length**  
**Intermediate level**

## Material

2 balls  
Knitting needles 8/5 mm  
Circular needles 8/5 mm  
Crochet hook D  
2 round acrylic handles as shown in the picture  
Fabric to line bag  
Measuring tape & scissors

## Stitch glossary and abbreviations:

st/sts: stitches  
CO: cast on  
BO: bind off  
rep: repeat  
mk: make  
dec: decreases  
inc: increases  
RS: right side  
WS: wrong side  
K: knit  
P: purl  
kfb: knit front and back = inc  
Stockinette Stitch: Knit RS rows and Purl WS rows  
1x1 Rib st: Row 1: \*K1, P1\*. Row 2 and all other rows: knit the knit stitches and purl the purl stitches.  
Pattern - follow chart  
Decreases - follow chart  
Crochet stitches:  
chain: ch  
single crochet: sc

**Gauge:** 15 S x 24 R = 4"/10 cm over St st using needles 8.

## Handbag

Start at the bottom.  
Provisional CO: use a contrasting color. CO 100 onto circular needles

8/5 mm and knit 3 rnds (. Switch to color #8336 lead and continue in St st. Insert st marker into first st to keep track of rnds. Start increasing, work as follows:

Rnd 1: inc 1 - 3, k49, inc 1 - 3, k49  
Rnd 2 and all even rnds: knit all sts.  
Rnd 3:(kfb, k1) 3x, kfb, k49, (kfb, k1) 3x, kfb, k49.  
Rnd 5:(kfb, k3, kfb, k1, kfb, k3, kfb, k49) 2x  
Rnd 7:(kfb, k5, kfb, k1, kfb, k5, kfb, k49) 2x  
Rnd 9:(kfb, k7, kfb, k1, kfb, k7, kfb, k49) 2x  
Rnd 11:(kfb, k9, kfb, k1, kfb, k9, kfb, k49) 2x  
Rnd 13:(kfb, k11, kfb, k1, kfb, k11, kfb, k49) 2x  
Rnd 15:(kfb, k13, kfb, k1, kfb, k13, kfb, k49) 2x  
Rnd 17:(kfb, k15, kfb, k1, kfb, k15, kfb, k49) 2x = 168 sts.  
Rnd 18: knit all sts.

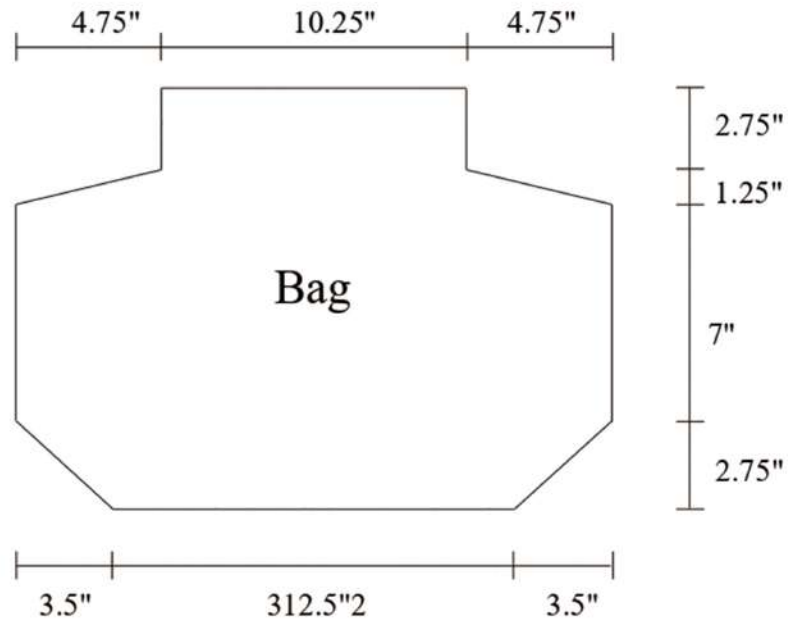
Rnd 19: follow Pattern chart. Once chart is completed, knit one more rnd (St st).

Divide work guided by the bottom increases (see chart) and finish sides separately. Switch to needles 8/5 mm and start decreasing - follow chart. Once this chart is completed, work in 1x1 Rib st. At 4" from the division, BO all stitches. Do the same on the other side.

## Assembly and finishing

Remove the contrasting color from the beginning and sew each stitch of the bottom. Line bag, leave 2.5" without fabric. Use crochet hook to attach handles with sc. Fasten off and weave in ends.

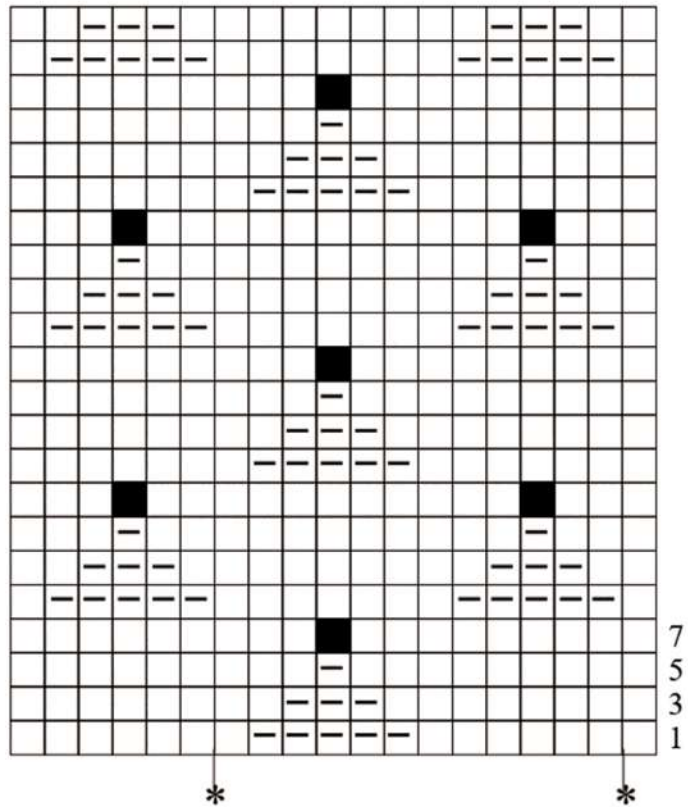
# GRAY HANDBAG



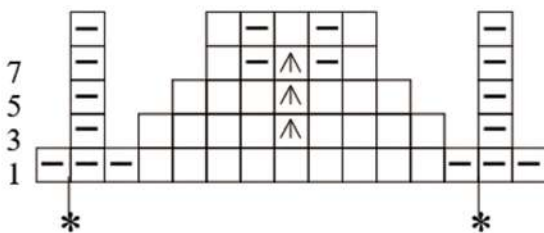
### Stitch key

- = knit
  - = purl
  - ^ = k3tog
  - = Bobble st: (k1, p1, k1, p1, k1) in the same st, turn, p5, turn, k5tog.
- WS: knit the knit stitches and purl the purl stitches.  
Repeat from \* to \*

### Pattern



### Decrease



Pattern last row

7  
5  
3  
1



Preferred Yarn to use from Vardhman Knitting Yarn:

# Cool Knit

